



NOVEMBER 2021



GFWC GA MORROW CIVIC WOMAN'S CLUB NEWSLETTER

Check us out at <https://mcwcga.org/>



A MESSAGE FROM OUR CO-PRESIDENTS

November is upon us, and the earth is moving into a different season as we begin pulling out sweaters and jackets for the colder weather to come. The pumpkins have been carved, and we are polishing off our Halloween candy. We have planted for fall, while the flowers of spring and summer have faded away. November brings fall to a close as we spend time with family and friends, as we pause to celebrate life and give thanks.

November brings a chill to the air, beautiful color to the trees, and an expectant look to the new beginnings of the coming year. Our lives have been changed by the pandemic, and now we are learning to cope and move forward with this very real challenge. As Cookie and I reflect on this past year, we agree it has been filled with impactful work and community outreach. All of you have been so generous with your time, talent, and treasure.

Now we must document the great work we have accomplished. As we have been reminded at state, district, and club meetings, it is important to record all we have contributed both locally and globally. Writing reports should not cause anyone stress. Gathering information beforehand will make the online reporting process less painful. You all did a great job last year, and we know you will do the same this year. As our time as co-presidents ends, we look forward to the new group of officers and chairpersons who will lead us forward in 2022.

Let us ponder on this wonderful nugget of wisdom and faith, as we reflect on all the blessings that are sent to us even in times of trial and sadness.

Don't wait until the fourth Thursday in November to sit with family and friends to give thanks. Make every day a day of Thanksgiving! ~ Charmaine J. Forde

May each of you have a most blessed and Happy Thanksgiving.

Thankfully,
Mary and Cookie

OUR COMMUNITY SERVICE PROGRAMS



Arts and Culture Community Service Program

The GFWC Arts and Culture Community Service Program encourages members to promote and support art and cultural programs in their clubs and communities, and to expand understanding on every level, from local and regional to national and international. Our goal is to create projects that include crafts, dance, drama,

food, music, and other manifestations of art and culture that develop skills, awareness, and appreciation. It is designed to inspire clubwomen and ignite within them a desire to make the world a more beautiful, thoughtful, and caring place.

In ARTS AND CULTURE, we are beginning to think about submitting entries for GFWC competition at the Spring convention. This month's focus is on Craft and Photo Submissions. Members are eligible to enter these categories. Please start looking for your best Crafts and Photos. The rules for Crafts and Photos are as follows:

GFWC MEMBER PHOTO CATEGORIES

- Photographs must be the original work of the member submitting the photograph.
- All contest photographers must be dues paying members of an active GFWC club.
- Photographs must be taken between January 1, 2019 and December 31, 2020, providing a special allowance for two years of photographs for the 2021 contests, since the 2020 Photography Contests were not held. Photographs must be taken between January 1, 2021 and December 31, 2021, for the 2022 Photography Contests.
- Contestants must be considered an amateur photographer.

GUIDELINES FOR PHOTOGRAPHY CONTESTS

- Photographs may be vertical/portrait or horizontal/landscape.
- Photographs must be the original work of the member submitting the photo.
- Each photograph must be an 8 X 10-inch print. Digital submissions alone will not be considered, but a high-resolution digital copy of the submission is encouraged.
- All photographs must be mounted on a rigid 8 X 10-inch board and overall thickness may not exceed 3/8 inch. NO mattes, frames, or hangers!
- Judges will look at the overall creativity of the subject and quality of the photograph.
- Photographs may be taken using film or with digital cameras and may be color or black and white.
- Photographs will NOT be returned.
- Each photograph must have a label affixed to its back with the following information:

Contest name: The World in Pictures with category or GFWC Living the Volunteer Spirit
 Photographer's Name
 Email Address
 Mailing Address
 Phone Number
 Name and State of the sponsoring club
 Title and brief caption giving location, date, and other pertinent info about the photograph
 Arrow indicating top of the photograph

GFWC MEMBER CRAFT CATEGORIES

- STITCHERY— needlepoint, petit point, cross stitch, smocking, embroidery, crewel
- SEWING
- KNITTING / CROCHETING
- QUILTING 1— Hand
- QUILTING 2— Machine
- NATURE CRAFTS— things found in nature

- JEWELRY
- MISCELLANEOUS— things that do not fit into other categories such as basket weaving, pottery, etc.
- PAINTING 1
 - Subject matter and choice of medium is choice of artist.
 - All paintings must be original.
 - Entry must be no smaller than 10”x12” and no larger than 30”x30” including matting.
 - Entries on materials other than canvas must be matted and have a stiff backing and covered with cellophane. Matting must be white or off-white.
 - Entries may be framed and/or under glass but cannot exceed 30” x 30.”
 - Pastels must be sprayed with a fixative.
 - The winning entry will receive the Dunwoody Woman’s Club Member Art Award
- PAINTING 2— Painting on china, wood or other material not covered in PAINTING 1
 - Paintings using multiple mediums and sometimes found and collage items
 - Entry must be no smaller than 10”x12” and no larger than 30”x30” including matting.
- Sketch Art - Ink, pencil, or charcoal
 - Entry must be no smaller than 10”x12” and no larger than 30”x30” including matting.
 - Entry must be matted and have a stiff backing and covered with cellophane.

RULES FOR MEMBER CRAFT COMPETITIONS

- Each member may submit only one entry per category but may enter multiple categories.
- If you are a professional, you may enter any category other than the one from which you receive income as stated above.
- Crafts must be completed between January 1, 2019 and December 31, 2020, providing a special allowance for two years of member crafts for the 2021 contests, since the 2020 Member Craft Competitions were not held. Crafts must be created between January 1, 2021 and December 31, 2021, for the 2022 Member Craft Competitions.
- Two entry forms must be completed for each craft submitted. One entry form must accompany the craft and the other entry form must be turned in to District Arts Chairman by January 25, 2022. You may get these forms from Heloise Wilson

Please send your volunteering hours and participation in the arts anytime during the year to Heloise Wilson at wils4929@bellsouth.net. Sign-up sheets will be available at club meetings.

Please enjoy the Arts and Culture Web Links at the end of the Newsletter!



Civic Engagement and Outreach Community Service Program

The GFWC Civic Engagement and Outreach Community Service Program reminds GFWC members that each of us is a part of a larger society and is responsible for undertaking actions that will create a better quality of life and foster a sense of community—locally,

regionally, nationally, and globally. This Community Service Program highlights and encourages citizenship; crime prevention, safety, and disaster preparedness; the needy, hungry, and homeless; and our military personnel and veterans.



Operation Christmas Child

Please bring your shoe boxes to the November meeting along with \$9.00 for each box to pay for the mailing. Make your check payable to MCWC. Remember NOT to include the following items in your shoe box: candy, toothpaste, gum, used or damaged items, scary or war-related items, seeds, food, liquids or lotions, medications or vitamins, breakable items or glass containers, or aerosol cans.



Toiletry Bags for Homeless

At the November meeting, we will be collecting toiletry items to fill bags for the homeless. These are some suggested items: bars of soap, washcloths (need 20), travel size lotion, shampoo, body wash, sanitizer wipes, and head covers for toothbrushes. Thank you for your participation in this project.

On Tuesday, November 16, there will be a group of ladies meeting at Magnolia House at 9:00 am for breakfast. The cost is \$10.00. We will leave from there and go to the First Baptist Church of Morrow to decorate and fill Christmas stockings for the veterans. Also, we will be putting together the toiletry bags for the homeless. If you can't join us for breakfast, then meet us at 10:00 am at the church. We hope to be finished by noon.



Forgotten Angels Gifts

Please bring your gifts or monetary donation to the November meeting. We will need some volunteers to shop for these children.



Veterans Day

Veterans Day is Thursday, November 11, 2021. Please remember to say thank you to these men and women for their service. We are honored to have Vickie Jennings, a veteran, as a club member. Thank you, Vickie, for your service to our country.



Education and Libraries Community Service Program

We aim to help others, while we also continue to learn. Projects in the Education and Libraries Community Service Program are designed to foster schools, as well as other educational institutions and opportunities. These projects promote libraries, literacy, and the love of a good book. Through these efforts, we encourage the growth of individuals and communities at home and around the world.

1. The director of the Pregnancy Care Center in Jonesboro will be the speaker at our November meeting. In the Center's newsletter she listed the following needs: infant clothes for boys, diapers, board books, baby wash/shampoo, baby wipes, baby bottles, baby bibs, and baby socks. Our CSP appreciates any of these items that you could bring to the meeting.
2. At St. Jude, they believe in giving every child the best chance of a cure. By freely sharing knowledge, technology, and research data, they are saving the lives of children both in their clinics and around the world. St. Jude was founded on the idea that no child should die in the dawn of life. Their goal is to cure at least 60% of children with six of the most common kinds of cancer worldwide by 2030. St. Jude Children's Research Hospital has joined with the World Health Organization and global partners to begin a collaboration that will focus exclusively upon improving cancer survival rates for children across the globe. Visit <https://www.stjude.org/> to donate or to "send a Free Card to St. Jude Kids". It will only take you a few minutes to write an encouraging note to patients undergoing treatment for cancer and other life-threatening diseases. Your comforting words will lift the spirits of the children and their families.



Environment Community Service Program

The GFWC Environment Community Service Program encourages us to become stewards of the earth by working to preserve the world's resources, protect wildlife and domesticated animals, live sustainably, and beautify our communities and enjoy nature. Environmental degradation is cumulative, and many scientists warn that we are at a tipping point. There is no time like the present to act.

Feeding birds is fun but use black oil sunflower seeds that birds will pick out and eat. Avoid seed mixes with millet and filler seeds. These are rarely eaten by the birds and attract rodents and undesirable wildlife.

This is the best time to plant spring-flowering bulbs now that the soil is cooler. Remember to add a little fertilizer as you dig the bed.

One of the most important things you can do this time of year is to check house gutters for fallen leaves, pine needles, and twigs. Heavy fall rains will quickly overflow clogged gutters, possibly damaging your home and the foundation plants around it.

This is one of the best times of the year to plant shrubs and trees. Even though its chilly outdoors, the soil is still warm enough to encourage root growth.

Bring used ink cartridges, batteries, magic markers, and crayons to club meeting to be recycled. Bins will be labeled for disposal.

While you are saving the planet remember to keep a record of your time and money spent:

- Recycling
- Picking up litter while you walk
- Reading or researching environmental issues
- Planning or working in your garden or yard



Health and Wellness Community Service Program

The human body, mind, and spirit comprise our health and wellness. To improve our well-being, we must address three key components: nutrition, disease prevention, and physical and emotional care. This Community Service Program aims to explore the various opportunities for awareness and advancement of each of these vital areas.

The GFWC Health and Wellness Service Program encourages each of us to stay active and take responsibility for our own health, to improve our wellbeing, and to live a good life. Overall, health and well-being address three key components: nutrition, disease prevention, and physical and emotional care. This Community Service Program aims to explore the numerous opportunities for awareness and advancement of each of these areas.



Alzheimer's Disease causes loss of memory and severe cognitive illness. Most people are not aware that they have the disease. To learn more about warning signs of Alzheimer's and Dementia visit the website: <https://alzfdn.org/alzawarenessmonth/>

To help raise awareness and promote the cause, wear **PURPLE** to our November club meeting.

Nutrition and Healthy Lifestyles

Support healthy eating by bringing individually wrapped samples and recipes of favorite snacks to share at the next club meeting.



National Hunger and Homeless Awareness Week is observed during November 13-21, 2021.

See how you can support this cause at website: <https://hhweek.org/>.

We are helping restock the First Baptist Church of Morrow food pantry. If you would like to participate, bring canned goods to the November club meeting. A drop box will be located near the kitchen entryway.

Emotional Care - Staying physically active for at least 30 minutes a day can help to improve your overall emotional health. Get moving, go for a walk, or dance around your house; it can help. Participate in club activities, join virtual family calls, try meditation exercises, and get enough sleep. Do something to build self-esteem and positive feelings about yourself.

Learn more about Emotional health at website: <https://www.wedmd.com>

Mindful, healthy mind, healthy life information can be found at <http://mindful.org>

Disease Prevention

COVID-19 Testing is available to all Georgians who request it. Learn more about CDC New Mask Guidance for People Fully Vaccinated. www.dph.georgia

Give Blood and find the nearest site to you at <https://redcross.org>. Donating blood is easy by downloading Blood Donor app, follow prompts, complete Rapid Pass. Let us be RED Cross Ready!



Thanks everyone, for your monetary donations. MCWC's first ever, Breast Cancer - Bra-ha-ha fundraiser raised and donated \$282 to American Cancer Society Making Strides Against Breast Cancer program. Congratulations to Pink Strong Steppers for crossing the 5k finish line on October 23 in record time. Give to SAVE LIVES at MakingStridesWalk.org, or cancer.org, or call 1-800-227-2345. WE ARE "PROUD PINK SUPPORTERS."

ON-GOING COLLECTIONS:

- Soda can pop tops for Ronald McDonald House
- Calendars for Good Shepherd Clinic
- Stuffed animals for Red Cross



Special Project: Women's History Resource Center (WHRC)



HELLO FROM FEECHI HALL, CLAYTON STATE UNIVERSITY ARCHIVIST

Recently, Lois Wolfe met with Feechi Hall via computer to discuss the MCWC Archival Project. The good news is that archival visits to the CSU Archives can be scheduled online at <https://www.clayton.edu/archives/planning-a-visit>. Due to contact tracing, though, only one person is allowed per visit. Lois plans to deliver the most recent club scrapbooks and documents by January.

Our MCWC Collection materials were featured by the CSU Archives during Women's History Month. Be sure to read the Instagram post at

https://www.instagram.com/p/CL723ocH4nL/?utm_source=ig_web_copy_link

The message begins with...

[claytonstateunivarchives](#)

Women Supporting Women! The Clayton State University Archives would like to highlight the efforts of the Morrow Civic Woman's Club (MCWC) and their commitment to awarding scholarships to local women within our community.

A Look Ahead: For scanning purposes, our club's WHRC team can consist of four members due to new protocols at Clayton State University. We will be considered as "non-paid affiliate workers" and will need to have background checks. Contact Lois if you are willing to serve on the WHRC team.



DOMESTIC VIOLENCE

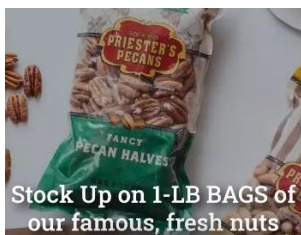
Haven House currently needs items to fill "goodie" bags for children in the shelter. They will be given to children as they get off the bus returning from school. Individually wrapped snacks or treats are requested. Please avoid nuts due to food allergies. You may bring your contributions to the November meeting.

Haven House also needs cash donations in the form of cash, checks, or through their online link, <https://givebutter.com/EHaM5Y>

COMMITTEES



Budget and Finance



Time to Sell Pecans!!

The Committee hopes that everyone is busy selling pecans. You will recall that due to Covid, this is the second year in which we have not been able to have a fundraiser outside of pecan sales. Consequently, the sales of pecans, Rada, and Serrv are of utmost importance to continuing the work that we do in our community.

The loss of club fundraisers is reflected in our bank balance. Last month the members voted to transfer a portion of the CD balance to our checking account so we can meet our obligations through the end of

the year (especially because we must pay for the cost of the pecans up front). We hope and pray that next year we will be able to start back with some other fundraisers.

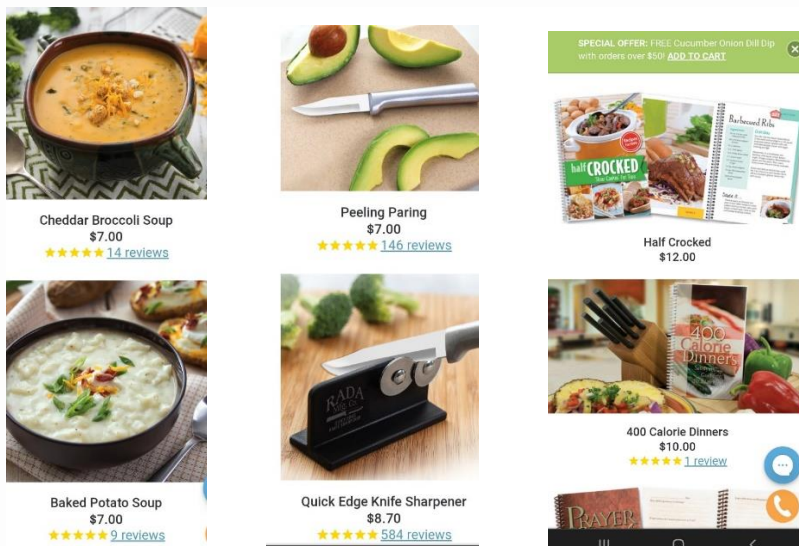
Order from SERRV for your Holiday Giving!!



Please continue to share the link <https://www.serrv.org/?a=MCWC> for **MCWC's Serrv International** fundraiser with your friends and family. If you will take the challenge and send the link to 12 more people, we can continue our momentum. SERRV International is a nonprofit, fair trade retailer that empowers marginalized global artisans to break the cycle of poverty through the sale of their handcrafts. The artisan partners prioritize investing in projects that create sustainable families and communities, including childcare and scholarships for children, health clinics, anti-trafficking programs, and environmental education programs. Your purchases help support the artists and their programs, as well as our club's outreach and service.

Order from Rada for your Holiday Cooking!!

Continue to place your orders and share the link for [MCWC Rada Sales](https://radafundraising.com/?rfsn=4699925.3900a81). Visit Rada Knives at <https://radafundraising.com/?rfsn=4699925.3900a81> for the MCWC fundraiser.





Club Relations

Our condolences and prayers go out to Mary Harmon in the loss of her mother. A check from our club has been sent to St. Philip Benizi Catholic Church in memory of Ellen Harmon, Mary's mother.

Books have been purchased in memory of Pat Henderson. They will be delivered in November to the McGarrah Elementary School library. If you would like to donate a book, please bring it to the November meeting.



Membership

It is an important time for Membership as this year closes. This month every member will be given a form to vote for our Woman of the Year, Citizen of the Year, and Family of the Year. If you miss the meeting, please try to get your vote to Heloise Wilson before Thanksgiving. Let her know by email or postal mail.

The Membership Committee is also excited to have our *Soup Supper*. The soups are always delicious, so do not miss this opportunity. Remember to invite a friend. See you there at our November meeting!



Scholarship Committee

Only a few months remain before the next period opens for scholarship applications. Beginning now through January, be on the lookout for possible applicants.

This year, Dr. Alex Hall, Professor of Philosophy and Director of the Honors Program at Clayton State University (CSU) was instrumental in disseminating information on the Andrea Lane Memorial Scholarship to potential applicants. In support of MCWC, Dr. Hall is writing a letter conveying the value of MCWC's scholarship for women 25+ years old attending CSU. His statement will be shared when the 2022 window for applying for the financial support is opened.



Scrapbook and Website

Just a reminder to capture MCWC's moments of service and fun in a photo and send to Karen Garcia and Kristy Coughlin for inclusion in the scrapbook and on our website. We can enjoy and appreciate these moments now and, in the years, to come. It is our HISTORY!

Text pictures and/or information to:

Scrapbook: Karen Garcia: 404-429-2761; garcia10218@bellsouth.net

Webpage: Kristy Coughlin: 770-527-6087; coughline@bellsouth.net




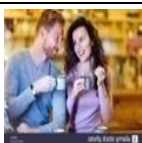
Tallulah Falls School (TFS)

Several donation items will be delivered to Tallulah Falls School this week due to your generosity. Heloise Wilson is taking dresses, skirts, golf balls, golf shirts and four good golf clubs.

HAPPY NOVEMBER, DECEMBER, and JANUARY!

(No Newsletter in December 2021 or January 2022)

SPECIAL OCCASIONS

<p><i>Happy November, December, and January Birthday!</i></p>		<p><i>Happy November, December, and January Anniversary!</i></p>	
<p><i>No December Birthdays</i> 11/20 – Karen Garcia 11/06 – Marilyn Mitchell 01/07 – Cookie Keene</p>		<p><i>No November or January Anniversaries</i> 12/11 – Angelia and Tommy Wright 12/12 – Marlynn and Ken Jones 12/19 – Heloise and Chuck Wilson 12/21 – Linda and Al Harrelson</p>	

HOSTESSES FOR NOVEMBER MEETING “SOUP SUPPER”

<p><i>Coordinator</i></p>	<p><i>Devotional</i></p>	
<p>Renee Goolsbee</p>	<p>Pam Ashman</p>	<p>Loretta Tucker, Dixie Hulse, Kristy Coughlin, Angela Wright, Linda Harrelson, and soon to be club member – Cindy Peterson</p>

NEXT ANNOUNCEMENT DEADLINE: NOVEMBER 22, 2021



State website: <https://gfwcgeorgia.org/>



National website: <https://gfwc.org/>

ARTS AND CULTURE FOR YOUR ENJOYMENT

Events and programs that enrich you in Arts and Culture: Here are some links you might enjoy!

On the Light Side: A Night at the Movies

A Musical Indoor Fundraiser Benefiting Capitol City Opera Company

Artistic Director - Michael Nutter; Music Director - Catherine Giel

Date: Saturday, November 13, 2021 – 6:00 p.m. Silent Auction and Indoor Picnic 7:00

p.m, Performance Location: **North Fayette United Methodist Church 847 New Hope Road Fayetteville, GA 30214**

CAST Victoria Kerr, Margaret McMurray, Ruth Mehari, Abigail Halon, Kayla Wilson, Eva Sullivan, Thainara Carvalho, Laurie Tossing, Michael Vavases, Jake McWhorter, William Green, Ivan Segovia, Timothy Marshall, and Dylan Cronan

Description: Capital City Opera Company's 28th Annual On the Light Side celebrates the classic Hollywood movies that made us fall in love with movie musicals. See your favorite classic movies come to live with music from Singin' in the Rain, 42nd Street, Funny Girl, Meet Me in St. Louis, and more. Featuring Atlanta's best singers, this indoor fundraiser is one of the CCOC's most popular events, and includes a silent auction, and a great evening of music, friends, and fun.

Tickets available online at www.ccityopera.org. General Admission \$40.00 or Table of 8 \$300.00

Spivey Hall

[\(678\) 466-4200](tel:6784664200)

Clayton State University Orchestra &
Southern Crescent Symphony Orchestra
PETER AND THE WOLF AND FRIENDS
A HALLOWE'EN FAMILY CONCERT

SUNDAY

OCT 31, 2021

3:00PM

Modigliani Quartet

“The Modigliani Quartet clearly belongs to the world’s greatest” (Le Monde)

SUNDAY

NOV 7, 2021

3:00PM

That Viola Kid

Virtual Young People's Concert

Violist Drew Alexander Forde, known online as That Viola Kid, has a reputation not only as an accomplished performer but also as one of classical music’s most recognizable online brands.

WEDNESDAY

NOV 10, 2021

11:00AM

Jonathan Ryan, organ
 “Ryan will take your breath away” (The Diapason)
 SATURDAY
 NOV 13, 2021
 3:00PM

Division of Music Vocal Studios
 Dr. Kurt-Alexander Zeller and
 Dr. Francisca Maxwell, directors
 Grant Jones, pianist
 Songs of Persistence, Persuasion, and Power: Women Composing
 Free, Tickets Required.
 General Admission, Capacity Limited to 200
 PRESENTED BY CLAYTON STATE UNIVERSITY’S DEPARTMENT OF VISUAL AND
 PERFORMING ARTS
 SUNDAY
 NOV 14, 2021
 3:00PM

Clayton State University
 Jazz Combo
 Stacey Houghton, director
 Free, Tickets Required.
 General Admission, Capacity Limited to 200
 PRESENTED BY CLAYTON STATE UNIVERSITY’S DEPARTMENT OF VISUAL AND
 PERFORMING ARTS
 WEDNESDAY
 NOV 17, 2021
 7:30PM

Georgia Tech Glee Club, Young People's Concert

Featuring a “healthily irreverent” blend of music, drama, and vocal/visual performance antics, the Georgia Tech Glee Club sings entirely original arrangements of usually unaccompanied music, utilizing vocal percussion, movement, and technology.

THURSDAY
 NOV 18, 2021
 11:15AM

Clayton Community Big Band
 Stacey Houghton, director
 Free, Tickets Required.
 General Admission, Capacity Limited to 200
 PRESENTED BY CLAYTON STATE UNIVERSITY’S DEPARTMENT OF VISUAL AND
 PERFORMING ARTS
 MONDAY
 NOV 22, 2021 at 7:30PM

Clayton Community Christmas

Free, Tickets Required.

General Admission, Capacity Limited to 200

PRESENTED BY CLAYTON STATE UNIVERSITY'S DEPARTMENT OF VISUAL AND PERFORMING ARTS

THURSDAY

DEC 2, 2021

7:30PM

Spivey Hall Children's Choir Holiday Concert \$25

One of Spivey Hall's most cherished traditions. Featuring the Spivey Hall Young Artists, Spivey Hall Children's Choir, & Spivey Hall Tour Choir.

FRIDAY

DEC 10, 2021

7:30PM

Saturday

Dec 11, 2021

3:00pm

SUNDAY

DEC 12, 2021

3:00PM

Christmas with

The King's Singers \$75

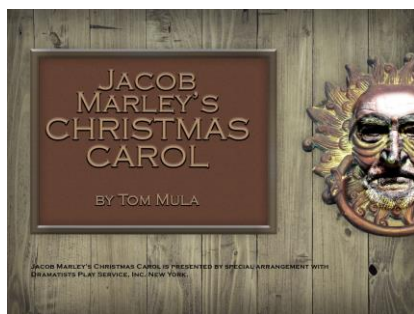
"Still unmatched for their sheer musicality and ability to entertain" (The Times)

SUNDAY

DEC 19, 2021

3:00PM

Southside Theatre Guild



Jacob Marley's Christmas Carol

Online price:

Adults: \$20* each

Children under 12: \$12*

Performance Dates:

December 2, 2021 8:00 PM

December 3, 2021 8:00 PM

December 4, 2021 2:30 PM

December 5, 2021 2:30 PM

December 9, 2021 8:00 PM
 December 10, 2021 8:00 PM
 December 11, 2021 8:00 PM
 December 12, 2021 2:30 PM

Please note that messages directed to this e-mail address can only be checked and returned by Box Office workers during periods when the Box Office is open. For more information on dates when Box Office is open, visit the reservations page @ <http://www.stgplays.com>
 E-mail: boxoffice@stgplays.com Phone: 770-969-0956

Clayton County Parks and Recreational
<http://www.claytonparks.com/>

SAT, NOV 6 AT 2 PM

[Chili Cook-Off and Cornhole Tournament](#)

Clayton County Parks and Recreation Department - 2300 Walt Stephens Rd, Jonesboro, GA 30236-4030, United States

Front Porch Players

We are so excited to announce our cast for Walking Across Egypt!
 Coming the two weekends before Thanksgiving, the play drawn from Clyde Edgerton's book, WALKING ACROSS EGYPT: NOVEMBER 12-14, 19-21

- DIRECTED BY KATHRYN WOOD
- Mattie Rigsbee–Karen Ferrell-White
- Robert Rigsbee–Chuck Matthews
- Alora Swanson–Cynthia Gardner
- Finner Swanson–Rick Jackson
- Lamar Benfield–Bert Capps
- Wesley Benfield–William Shiflett
- Reverend Bass–Bob Ensign
- Sheriff Tillman – Joe Wiley

Music:

- Pianist – Helen Byars
- Choir Director–Teliea Harwell
- Asst. Choir Director–Cindy Rego
- Choir Members: Diane Morris, Carrie Green, Cody Rentz, Natalie Walters

PRODUCTION CREW:

- Producer–Lisa Shiflett
- Technical Director–Bob Wood
- Sound–Elton Todd
- Lighting—Tim Spear
- Graphic Design–Sammie Real iii

Upon discovering a stray dog on her back porch, Mattie decides she is too old to keep a pet and calls the dogcatcher. Little does she know that the dogcatcher, Lamar, will open her eyes to a whole world

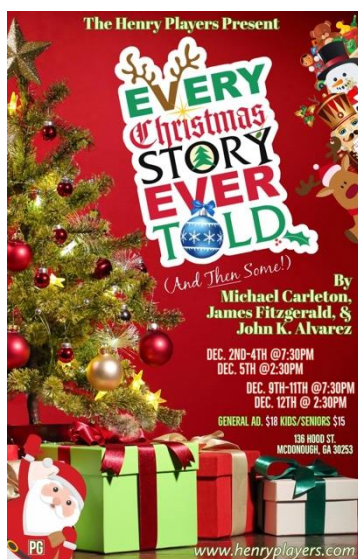
she never knew existed, a world that includes car theft, prison breaks and a juvenile delinquent named Wesley who is as desperate for a family as she is. Armed with only her mouthwatering cornbread and a deep abiding faith in the Almighty, Mattie is determined to woo Wesley to the side of God and good Southern manners.

<http://thefrontporchplayers.com/coming-attractions/>

Legacy Theatre

To go to this line up visit: <http://www.thelegacytheatre.org>
404-895-1473

Henry Players



Health and Safety at all shows:

Temperature screenings will be conducted at the door. Masks for patrons are required until you arrive at your seat. We have reduced capacity in the theater and are providing patrons socially distanced seating. A question has been added to our reservation system for patrons to request to sit together and we will do our best to accommodate. Concessions are available and will be brought to you safely at your seat. Thank you for your support!

Doors open 45 min before showtime. Please be prompt. Empty Seats will be filled 10 minutes before showtime. If this occurs with your ticket, we can issue you a ticket for a future show date if seats are available.

Our box office phone number is [770.892.9906](tel:770.892.9906)

All Showtime are Thurs, Friday & Sat @ 7:30; Sunday @ 2:30; **doors open 45 minutes prior to show**



They allow you to watch some productions from home.

<https://www.horizontheatre.com/horizon-at-home/>

The Box Office is open Tuesday-Saturday from 12-5 PM. Call 404.584.7450 to speak with a box office attendant.